

MEET



HandPICKED
HOTELS





INSPIRED MEETINGS & EVENTS

CONTENTS

- 3 Our Venues >
- 4 Beyond Business >
- 5 Inspired Meetings >
- 6 Corporate Exclusive Use >
- 7 Team Building >
- 8 Food & Drink >
- 9 Extra Touches >
- 10 M25 & South East >
- 22 South West >
- 30 Midlands >
- 40 North >
- 48 Scotland >
- 52 Channel Islands >
- 61 Our Commitment >
- 62 Group Capacity Chart >



OUR VENUES



M25 & South East

1. Brandshatch Place Hotel & Spa Fawkham, Kent >
2. Buxted Park Hotel Ashdown Forest, East Sussex >
3. Chilston Park Hotel Lenham, Kent >
4. Nutfield Priory Hotel & Spa Nutfield, Surrey >
5. Woodlands Park Hotel Cobham, Surrey >

South West

6. Audleys Wood Hotel Basingstoke, Hampshire >
7. Bailbrook House Hotel Bath, Somerset >
8. Rhinefield House Hotel The New Forest, Hampshire >

Midlands

9. Ettington Park Hotel Stratford-upon-Avon, Warwickshire >
10. Fawsley Hall Hotel & Spa Fawsley, Northamptonshire >
11. New Hall Hotel & Spa Sutton Coldfield, Birmingham >
12. Stanbrook Abbey Hotel Callow End, Worcester >

North

13. Crathorne Hall Hotel Yarm, North Yorkshire >
14. Rookery Hall Hotel & Spa Nantwich, Cheshire >
15. Wood Hall Hotel & Spa Wetherby, West Yorkshire >

Scotland

16. Norton House Hotel & Spa Edinburgh >

Channel Islands

17. Braye Beach Hotel Braye Street, Alderney >
18. Fermain Valley Hotel Fermain Lane, St Peter Port, Guernsey >
19. Grand Jersey Hotel & Spa St Helier, Jersey >
20. L'Horizon Beach Hotel & Spa St Brelade, Jersey >
21. St Pierre Park Hotel, Spa & Golf Resort St Peter Port, Guernsey >





BEYOND BUSINESS

Welcome to our collection of unique meeting and event spaces located across the UK and Channel Islands. Our stunning buildings and beautiful grounds offer business teams the opportunity to escape their everyday. The popularity of hybrid and remote working has made bringing people together more important than ever. Engage and connect free from distractions within inspiring and luxurious surroundings.

Our expert event planners are on hand to assist in creating bespoke packages based on you or your clients' individual requirements, helping to make unforgettable shared experiences.

ESG is a cornerstone of our culture. From supporting local communities to reducing our environmental impact, enjoy your experience with peace of mind that Hand Picked Hotels is committed to its ambitious sustainability targets.

Read more >





INSPIRED MEETINGS

Hand picked for you

Exclusive board meetings, away days, training events and conferences for 8, 24 or 32 hours or as long as you need. Our collection offers a range of venue spaces including a mix of traditional boardrooms, large conference suites, breakout rooms for training or dining as well as modern, dedicated conference centres - there is an abundance of adaptable space, inside and out, to host your event your way.

What you can expect:

4 simple packages from micro day meetings to 32 hour (or longer) events

Unique and show-stopping meeting rooms

Modern dedicated conference centres at selected venues

Natural daylight and access to terraces, patios and lawns

Dedicated Hand Picked Host from the moment you arrive

Fast, efficient Wi-Fi, table top multi-plug adaptors and Sonos smart speaker

LCD projector and screen or TV, flip chart and stationery pack





CORPORATE EXCLUSIVE USE

Our house is your home

For ultimate privacy and optimum use of space, we offer Exclusive Use at one of our country house or island resort venues. Alternatively you can choose Part-Exclusive Use; with a self-contained section of a venue just for your group. Our specialist event teams help you plan seamlessly in advance and deliver an exceptionally high quality yet discreet service during the entire event itself - providing you with a totally bespoke corporate experience like no other.

What you can expect:

Flexibility to make our venue or self-contained area your own, and your event exactly how you want it

Ideal for exclusive product launches and car launches at selected venues

Adjoining meeting spaces that flow seamlessly from one room to another

Venues with private cinemas at selected locations

Expert chefs to create a variety of dining experiences tailored to your event





TEAM BUILDING

Let's have some fun

There is an abundance of space at a Hand Picked Hotel, with each venue set in acres of gardens, parkland and woodland for your delegates to enjoy. From the intimate to the extravagant, we go above and beyond to tailor-make an experience that best meets your objectives and aligns with your brand. Our venues are easily accessible and flexible, with multi-use event rooms and outdoor spaces for work and play.

What you can expect:

- Archery
- Duck herding
- Chef's table dining
- Cocktail masterclasses
- Motorised go karting
- Falconry
- Wellness retreats





FOOD & DRINK

Nourished and energised

Our chefs focus on fresh, seasonal ingredients that cater for all dietary requirements with minimal food miles. Indulgent treats are not forgotten though and these will most definitely be enjoyed during any Hand Picked experience.

Expert event planners help you to bring your event food and drink together with energising breaks, seasonal lunches and our signature in-room 'help yourself' mini bars.

For 24 hour (or longer) events this extends into the evening with a range of pre-dinner drink activities and flexible dining options for your delegates.

What you can expect:

In-room mini bar with still and sparkling water, soft drinks, chocolate bars and seeded bars

Morning break with tea and coffee, fresh fruit, savoury snack with a local twist and fruit smoothie

Conference seasonal lunch selection with healthy salads, freshly baked breads, cold meat, cheese or fish platters, seasonal main course and dessert

Afternoon break with tea and coffee, fresh fruit, sweet snack with a local twist and fruit smoothie

24 and 32 hour events include a 3 course plated dinner or we can create a range of relaxed or themed options; BBQs, hog roasts, burger bars or a vegetarian or vegan feast





EXTRA TOUCHES

Make it memorable

We have some sensational upgrade options available to turn a great event into something quite remarkable. We welcome and encourage your own thoughts and ideas and can't wait to help you create an event that's completely bespoke to you and your event objectives.

What you can expect:

Treat delegates to a full traditional breakfast in a private dining room on arrival

Upgrade to an impressive 2 or 3 course plated lunch

Deliver customised doughnuts, cream tea, mini ice cream tubs or pic'n'mix sweets to the meeting room

Send a cold glass of Champagne to delegates getting ready for dinner in their rooms, or a nightcap before bed

Entertain with a themed bar and mixologist before dinner

Switch up dinner time with our food trucks serving street food, wood-fired pizza and more...



M25 & SOUTH EAST





M25 & SOUTH EAST

At a glance

Train services from within 30 minutes of Central London

Access to London Heathrow, Gatwick and City airports

Access to Ebbsfleet and Ashford International train stations

Connections to Eurostar services and Channel ports

Easy access to the M25, M23, M20 and other major roads





BRANDSHATCH PLACE

HOTEL & SPA
FAWKHAM, KENT

At a glance



38 bedrooms
6 flexible meeting rooms
Host up to 160 delegates



Nearest Motorway Link
M25 / M20 5 miles



Nearest Airport
London City 20 miles
Gatwick 30 miles



Nearest Train Station
Longfield 2 miles
Ebbsfleet International 7 miles /
17 minutes to London St Pancras



12 Acres
Private grounds



Health Club and Spa
Gym, pool, classes, spa



Wi-Fi
Complimentary high speed Wi-Fi



Parking
Complimentary parking



Electric Vehicle Charge Point
On-site charging



BRANDSHATCH PLACE HOTEL & SPA

	Max Capacity	Cabaret	Classroom	Theatre	U-Shape	Boardroom	Reception	Dining	Dimensions (metres)	Meeting Rooms	Bedrooms
Terrace Suite	160	60	48	160	36	31	150	110	L14.4 x W11.1 x H3	6	38
Garden Room	24	15	9	24	10	14	-	-	L9.3 x W5.7 x H2.1		
Ash	36	20	12	36	15	14	-	30	L7.2 x W6.2 x H2.7		
Boardroom	36	20	12	36	15	14	-	30	L8.3 x W6.7 x H2.8		
Oak	50	-	-	50	-	27	-	40	L11 x W4.2 x H2.2		
Atrium	150	-	-	-	-	-	150	-	L13.4 x W10.9 x H3.9		

Located just ten minutes from the M25 and M20, Brandshatch Place is a Georgian mansion set in the Kent countryside just 25 miles from Central London.

The largest space, the Terrace Suite, has its own dedicated entrance, complete with reception area, cloakroom and outdoor courtyard. There are also extensive leisure facilities on-site where delegates can unwind and a large front lawn ideal for team building activities.

Brandshatch Place Hotel & Spa Brands Hatch Road, Fawkham, Kent DA3 8NQ (sat nav DA3 8PD)
01474 875000 brandshatchplace@handpicked.co.uk





BUXTED PARK

HOTEL

ASHDOWN FOREST, EAST SUSSEX

At a glance



43 bedrooms

5 flexible meeting rooms

Host up to 200 delegates

Private cinema



Nearest Motorway Link

M25/M23 24 miles



Nearest Airport

Gatwick 24 miles



Nearest Train Station

Buxted 0.5 miles / Uckfield 2.7 miles



312 Acres

Private grounds



Gym

On-site fitness room



Wi-Fi

Complimentary high speed Wi-Fi



Parking

Complimentary parking



BUXTED PARK HOTEL

	Max Capacity	Cabaret	Classroom	Theatre	U-Shape	Boardroom	Reception	Dining	Dimensions (metres)	Meeting Rooms	Bedrooms
Ballroom	200	85	60	180	45	50	200	120	L13.6 x W9.1 x H4	5	43
Library	60	20	20	60	20	24	60	30	L8.4 x W6.2 x H4		
Blue Drawing Room	30	15	10	30	10	15	30	20	L6 x W6.3 x H4		
Red Drawing Room	60	20	20	60	20	25	60	30	L8.5 x W6.3 x H4		
Private Cinema	55	-	-	55	-	-	55	-	L9 x W7 x H2.5		

Situated within 312 acres of the finest East Sussex parkland, Buxted Park is a rural Palladian mansion located 35 minutes south of the M25 and 30 minutes from both Tunbridge Wells and Brighton.

Light and airy meeting rooms with high ceilings and stately features promise to host memorable events, especially exclusive use, while the breath-taking grounds lend perfectly to team building or alfresco meetings.

Buxted Park Hotel Buxted, Near Uckfield, East Sussex TN22 4AY (sat nav TN22 4AY)
01825 733333 buxtedpark@handpicked.co.uk





CHILSTON PARK

HOTEL
LENHAM, KENT

At a glance

53 bedrooms



8 flexible meeting rooms

Host up to 150 delegates

Self-contained and semi exclusive

Coach House and meeting rooms



Nearest Motorway Link

M25/M20 6 miles



Nearest Airport

Gatwick 43 miles



Nearest Train Station

Lenham 1.5 miles

Ashford International 12 miles /
37 minutes to London St Pancras



77 Acres

Private grounds



Wi-Fi

Complimentary high speed Wi-Fi



Parking

Complimentary parking



CHILSTON PARK HOTEL

	Max Capacity	Cabaret	Classroom	Theatre	U-Shape	Boardroom	Reception	Dining	Dimensions (metres)	Meeting Rooms	Bedrooms
Orangery	150	30	30	100	18	20	150	50	L9.4 x W8.1 x H2	8	53
Fitzhammond Suite	150	46	44	120	40	40	150	100	L15.2 x W7.8 x H3		
- Miller Suite	100	30	24	40	20	20	100	50	L9.4 x W7.8 x H3		
- Viscount	30	18	20	30	12	14	-	30	L8.9 x W5.3 x H2.9		
The Coach House	120	42	33	100	36	32	120	60	L13.1 x W5.9 x H3.2		
Tack Room	10	-	-	-	-	10	-	-	L6.7 x W4.7 x H2.5		
Library	14	12	8	14	8	12	-	14	L5.4 x W4.8 x H2.5		
Green Room	20	12	12	20	10	14	20	20	L6 x W4.5 x H2.5		
Hamilton	10	-	-	-	-	10	-	-	L6.5 x W3.9 x H2.8		

Chilston Park is a charming and welcoming venue with flexible space for meetings and events just moments from the M20 and close to Ashford and Maidstone.

Ideal for delegates travelling from London, or into the UK via the Channel Tunnel, Chilston Park has exemplary function space including elegant meeting rooms in the main house and the self-contained semi exclusive Grade II listed Coach House.

Chilston Park Hotel Sandway, Lenham, Maidstone, Kent ME17 2BE (sat nav ME17 2BE)
01622 859803 chilstonpark@handpicked.co.uk





NUTFIELD PRIORY

HOTEL & SPA
NUTFIELD, SURREY

At a glance



60 bedrooms
9 flexible meeting rooms
Host up to 120 delegates



Nearest Motorway Link
M25 4 miles



Nearest Airport
Gatwick 10 miles/Heathrow 30 miles



Nearest Train Station
Redhill 2 miles/30 minutes to
London Bridge



12 Acres
Private grounds



Health Club and Spa
Gym, pool, classes, spa



Wi-Fi
Complimentary high speed Wi-Fi



Parking
Complimentary parking



Electric Vehicle Charge Point
On-site charging

NUTFIELD PRIORY HOTEL & SPA

	Max Capacity	Cabaret	Classroom	Theatre	U-Shape	Boardroom	Reception	Dining	Dimensions (metres)	Meeting Rooms	Bedrooms
Fielden Suite	120	60	50	100	40	42	120	100	L12.6 x W8.8 x H4.9	9	60
Gibson	70	40	35	70	32	34	70	60	L11 x W8.8 x H3.7		
Kenley	30	14	-	30	-	14	-	-	L8.6 x W4.6 x H3.1		
Leigh	16	-	-	-	-	16	-	20	L7 x W6 x H4.6		
Worth	10	-	-	-	-	10	-	12	L6.5 x W5.5 x H4.6		
Earlswood	15	-	-	15	-	8	-	-	L5.4 x W4.6 x H3.1		
Study	10	-	-	-	-	8	-	10	L5.9 x W3.5 x H3.7		
Godstone	9	-	-	9	-	6	-	-	L5.2 x W3 x H3.1		
Oxted	9	-	-	9	-	6	-	-	L5.6 x W3 x H3.1		

With commanding rural views overlooking three counties, it is easy to forget that Nutfield Priory is situated just minutes from the M25, close to London Gatwick Airport and a 30 minute direct train ride from London Victoria to Redhill. The hotel offers a welcoming mix of period charm and contemporary elegance with meeting rooms that boast natural daylight and impressive features from fireplaces to traditional bay windows. Nutfield Priory also sits within impressive grounds ideal for outdoor dining and a full range of team building activities.

Nutfield Priory Hotel & Spa Nutfield, Near Redhill, Surrey RH1 4EL (sat nav RH1 4EL)

01737 824400 nutfieldpriory@handpicked.co.uk





WOODLANDS PARK

HOTEL
COBHAM, SURREY

At a glance



57 bedrooms
9 flexible meeting rooms
Host up to 200 delegates



Nearest Motorway Link
M25 6 miles



Nearest Airport
Heathrow 16 miles/Gatwick 20 miles



Nearest Train Station
Cobham 1 mile/Leatherhead 1 mile
40 minutes to London Waterloo



8 Acres
Private grounds



Gym
On-site fitness room, multi-sports court



Wi-Fi
Complimentary high speed Wi-Fi



Parking
Complimentary parking



Electric Vehicle Charge Point
On-site charging



WOODLANDS PARK HOTEL

	Max Capacity	Cabaret	Classroom	Theatre	U-Shape	Boardroom	Reception	Dining	Dimensions (metres)	Meeting Rooms	Bedrooms
Prince of Wales Suite	200	75	56	200	45	45	200	150	L13 x W12 x H3	9	57
Cornwall Suite	100	42	30	80	30	30	100	70	L13 x W6 x H3		
Drawing Room	70	24	25	70	26	24	50	50	L11 x W5 x H3		
Sitting Room	40	20	14	35	18	20	30	30	L8 x W6 x H3		
Study	30	14	10	25	10	14	25	20	L7 x W6 x H3		
Chester Suite	40	-	8	25	12	12	-	20	L6 x W6.1 x H3		
Lancaster Suite	60	-	-	-	-	-	60	-	L7.7 x W6.7 x H3		
Boardroom	10	-	-	-	-	8	-	8	L6 x W3 x H3		
Garden Room	12	-	-	-	-	8	-	12	L5 x W4 x H3		

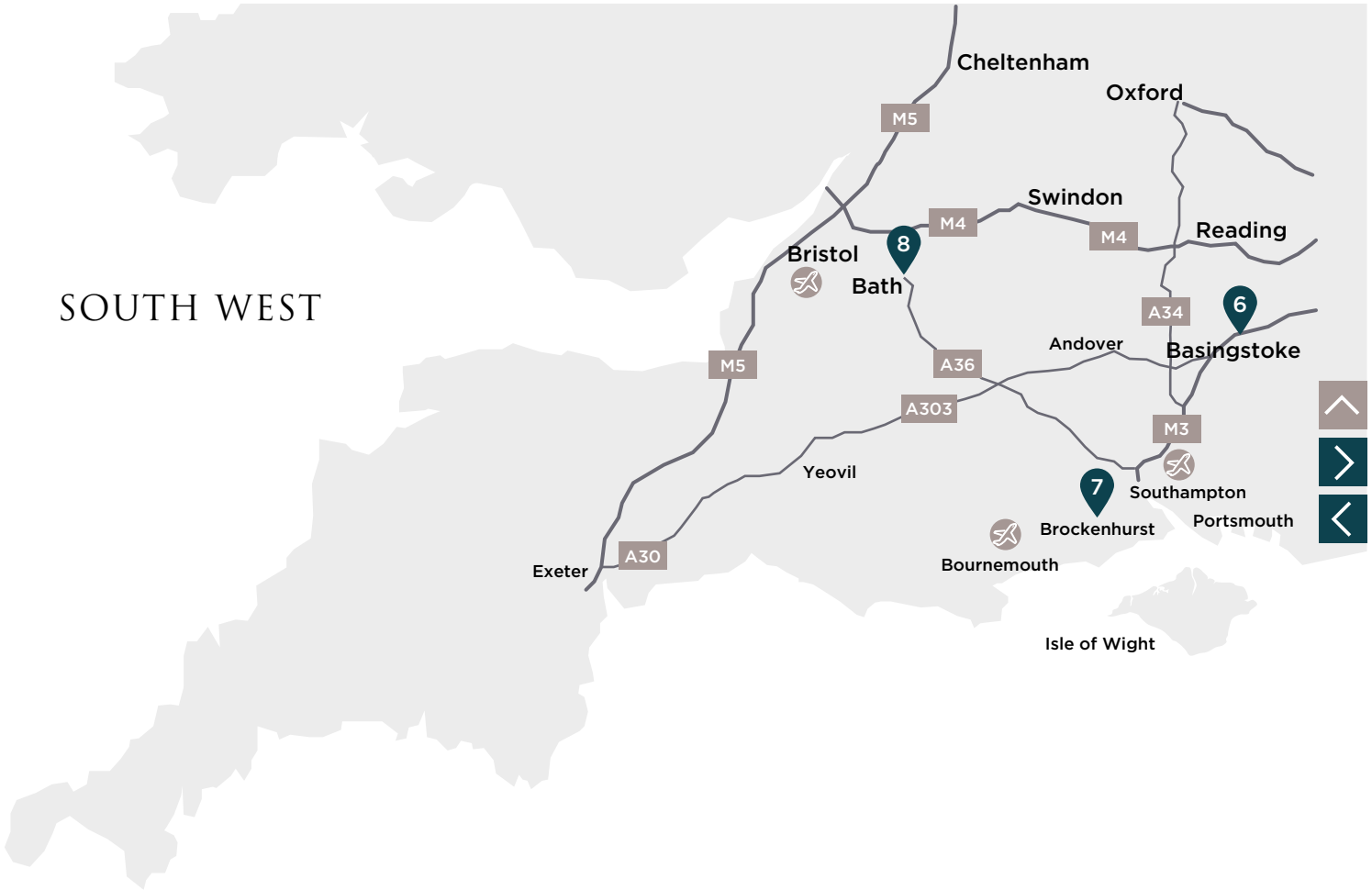
Woodlands Park is a charming Victorian property located between J9 and J10 of the M25 in Surrey, with easy access to Heathrow and Gatwick airports and only 40 minutes from London Waterloo and Victoria train stations.

An inspiring setting for delegates, Woodlands Park has a range of elegant function spaces with period features and an abundance of natural daylight. Its brand new terrace opening out onto lawns is also ideal for outdoor dining and team building events.

Woodlands Park Hotel Woodlands Lane, Stoke D'Abernon, Cobham, Surrey KT11 3QB (sat nav KT11 3QB)
01372 843933 woodlandspark@handpicked.co.uk



SOUTH WEST





6. Audleys Wood Hotel
Basingstoke, Hampshire



7. Rhinefield House Hotel
The New Forest, Hampshire

SOUTH WEST

At a glance

Prime locations for Reading, Bath city centre and the New Forest

Access to Southampton, Bristol and Bournemouth airports

Connections to M3, M4 and other major roads



8. Baillbrook House Hotel
Bath, Somerset





AUDLEYS WOOD

HOTEL
BASINGSTOKE, HAMPSHIRE

At a glance



68 bedrooms
6 flexible meeting rooms
Host up to 200 delegates
Garden Pavilion



Nearest Motorway Link
M3 2 miles



Nearest Airport
Southampton 31 miles
Heathrow 40 miles



Nearest Train Station
Basingstoke 2 miles
Easy access to London



7 Acres
Private grounds



Wi-Fi
Complimentary high speed Wi-Fi



Parking
Complimentary parking



Electric Vehicle Charge Point
On-site charging



AUDLEYS WOOD HOTEL

	Max Capacity	Cabaret	Classroom	Theatre	U-Shape	Boardroom	Reception	Dining	Dimensions (metres)	Meeting Rooms	Bedrooms
Garden Pavilion	200	160	80	200	45	60	200	200	L30 x W12 x H2.3	6	68
Sir George Bradshaw	50	32	12	50	25	24	50	40	L7.2 x W7 x H2.8		
Lord Camrose	50	32	12	50	25	24	50	-	L7.2 x W7 x H2.8		
Lord Bolton	30	16	10	30	10	14	30	-	L7.2 x W5.2 x H2.8		
Lord Curzon	30	16	10	30	10	14	30	-	L7.2 x W5.2 x H2.8		
Simonds Room	30	16	15	30	10	15	30	20	L7.2 x W5.2 x H2.8		

A former Victorian country mansion, Audleys Wood is located within easy reach of major motorways making it an ideal retreat from the capital.

The hotel offers wonderful character and charm, with six flexible meeting rooms displaying original features blended with contemporary décor and lots of natural light. The largest space, the Garden Pavilion, has its own dedicated entrance, complete with foyer, sound insulation, air conditioning and heating, as well as a private patio and hog roast machine.

Audleys Wood Hotel Alton Road, Basingstoke, Hampshire RG25 2JT (sat nav RG21 3BA)
01256 817555 audleyswood@handpicked.co.uk





BAILBROOK HOUSE

HOTEL
BATH, SOMERSET

At a glance



88 bedrooms
12 flexible meeting rooms
Host up to 200 delegates
Dedicated conference wing



Nearest Motorway Link
M4 8 miles



Nearest Airport
Bristol 20 miles



Nearest Train Station
Bath Spa 2.5 miles



20 Acres
Private grounds



Gym
On-site fitness room



Wi-Fi
Complimentary high speed Wi-Fi



Parking
Complimentary parking



Electric Vehicle Charge Point
On-site charging



BAILBROOK HOUSE HOTEL

	Max Capacity	Cabaret	Classroom	Theatre	U-Shape	Boardroom	Reception	Dining	Dimensions (metres)	Meeting Rooms	Bedrooms
Brunel Suite	200	80	60	160	40	48	200	120	L17.8 x W8.4 x H3.5	12	88
Queen Charlotte	60	40	24	60	24	24	70	40	L9.4 x W6.4 x H4.4		
Newbridge	60	45	24	60	26	28	60	40	L9.7 x W8.5 x H2.5		
Cleveland	40	24	18	30	16	18	42	-	L8.2 x W6.8 x H2.5		
Duke of Clarence	40	20	18	30	18	20	30	30	L8.5 x W6.6 x H4.4		
Victoria	20	-	-	20	12	14	-	-	L7.3 x W4.5 x H2.5		
Midland	8	-	-	-	-	8	-	-	L5.4 x W3.5 x H2.5		
Pulteney	8	-	-	-	-	8	-	-	L5.4 x W3.5 x H2.5		
Alexandra	24	-	-	24	10	14	-	14	L6.6 x W5.1 x H3		
Royal Victoria	12	-	-	-	6	12	-	12	L5.7 x W5.1 x H3		
Sydney	10	-	-	-	-	10	-	10	L6 x W3.9 x H3		
Henrietta	10	-	-	-	-	8	-	10	L7.2 x W3.2 x H3		

Bailbrook House has a wonderful mix of period and modern function spaces. Ideal for large groups, the hotel also has a dedicated conference centre, Bailbrook Court, and offers free parking and extensive grounds for conferences and team building events.

Bailbrook House Hotel Eveleigh Avenue, London Road, Bath, Somerset BA1 7JD (sat nav BA1 7DA)
01225 855100 bailbrookhouse@handpicked.co.uk





RHINEFIELD HOUSE

HOTEL
THE NEW FOREST, HAMPSHIRE

At a glance



50 bedrooms
9 flexible meeting rooms
Host up to 160 delegates
Dedicated meetings facility



Nearest Motorway Link
M27 8 miles



Nearest Airport
Bournemouth 20 miles
Southampton 22 miles



Nearest Train Station
Brockenhurst 3 miles
Southampton 20 miles



40 Acres
Private grounds



Swimming Pool and Gym
Indoor and outdoor pool, gym,
treatments



Wi-Fi
Complimentary high speed Wi-Fi



Parking
Complimentary parking



Electric Vehicle Charge Point
On-site charging

RHINEFIELD HOUSE HOTEL

	Max Capacity	Cabaret	Classroom	Theatre	U-Shape	Boardroom	Reception	Dining	Dimensions (metres)	Meeting Rooms	Bedrooms
Grand Hall	130	60	40	120	40	48	130	100	L15.8 x W7.5 x H11.3	9	50
Kings	100	30	25	80	30	35	100	50	L8.2 x W6.1 x H3.9		
Keepers	40	20	16	40	25	28	-	30	L9.7 x W5.4 x H3		
Hurst Castle	160	60	72	160	55	56	100	100	L14.6 x W8.3 x H3		
- Hurst Suite	50	25	30	50	35	25	50	40	L6.3 x W8.3 x H3		
- Castle Suite	60	25	45	60	35	25	50	50	L7.9 x W8.3 x H3		
Brockenhurst	12	-	-	-	-	12	-	-	L4.5 x W6.1 x H3		
Bucklers	12	-	-	-	-	12	-	-	L4.5 x W6.1 x H3		
Lyndhurst	12	-	-	-	-	12	-	-	L3.9 x W6.1 x H3		
Oriel	8	-	-	-	-	6	-	8	L4.9 x W4.4 x H3		

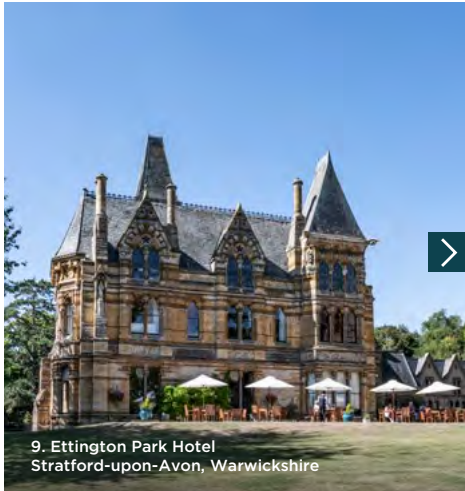
Located in the New Forest National Park and set in 40 acres of private grounds, Rhinefield House is a magnificent country house venue with traditional meeting rooms in the main house and a contemporary self-contained conference centre, Hurst Castle. Overlooking the forest from floor-to-ceiling windows, Hurst Castle has plenty of space and is ideal for meetings, conferences, product launches and exclusive use events.

Rhinefield House Hotel Rhinefield Road, Brockenhurst, Hampshire SO42 7QB (sat nav SO42 7QB)
01590 622922 rhinefieldhouse@handpicked.co.uk

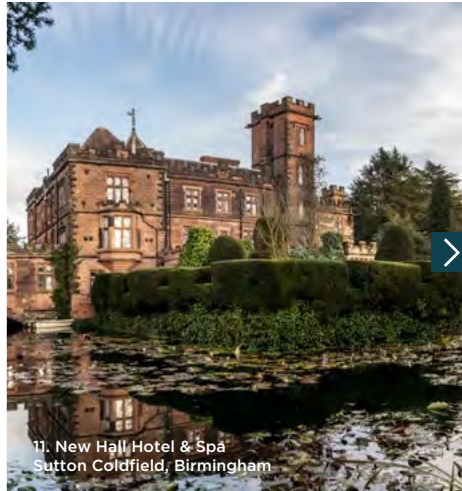


MIDLANDS





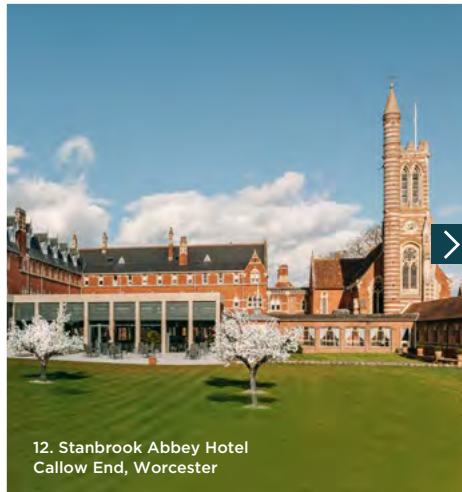
9. Ettington Park Hotel
Stratford-upon-Avon, Warwickshire



11. New Hall Hotel & Spa
Sutton Coldfield, Birmingham



10. Fawsley Hall Hotel & Spa
Fawsley, Northamptonshire



12. Stanbrook Abbey Hotel
Callow End, Worcester



MIDLANDS

At a glance

Prime locations for Birmingham, Worcester, Stratford-upon-Avon and Northampton

Access to Birmingham International airport

Connections to M40, M1, M6, M5 and other major roads





ETTINGTON PARK

HOTEL

STRATFORD-UPON-AVON, WARWICKSHIRE

At a glance



47 bedrooms
6 flexible meeting rooms
Host up to 100 delegates



Nearest Motorway Link
M40 11 miles



Nearest Airport
Birmingham 31 miles



Nearest Train Station
Stratford-upon-Avon 6 miles



40 Acres
Private grounds



Swimming Pool and Tennis Court
Pool, spa pool, steam room and sauna



Wi-Fi
Complimentary high speed Wi-Fi



Parking
Complimentary parking



Electric Vehicle Charge Point
On-site charging



ETTINGTON PARK HOTEL

	Max Capacity	Cabaret	Classroom	Theatre	U-Shape	Boardroom	Reception	Dining	Dimensions (metres)	Meeting Rooms	Bedrooms
Long Gallery	100	64	48	100	42	48	100	-	L21 x W5.4 x H6.1	6	47
Hathaway	100	40	32	90	30	35	100	60	L11.6 x W7.2 x H4.2		
Library	60	24	24	54	24	28	60	44	L10.5 x W4.6 x H6.2		
Courtyard	60	32	24	60	22	24	60	50	L10.7 x W5.9 x H2.7		
Chapel	30	-	-	24	-	14	-	14	L6.1 x W3.4 x H3.4		
Oval Office	10	-	-	-	-	10	-	10	L4.2 x W4.2 x H3.2		
Great Drawing Room also available for Exclusive Use only - Dining capacity 100											
5 syndicate rooms also available - Boardroom capacity 6											

Set within the stunning Cotswolds landscape and a stone's throw from Stratford-upon-Avon, Ettington Park is a Neo-Gothic mansion with versatile space inside and 40 acres of grounds in which to enjoy a full range of team building events.

Ideal for conferences, meetings and exclusive use events, Ettington Park's function rooms are full of character and charm yet offer natural daylight and a comfortable and inspiring environment for modern-day events.

Ettington Park Hotel Alderminster, Stratford-upon-Avon, Warwickshire CV37 8BU (sat nav CV37 8BU)
01789 450123 ettingtonpark@handpicked.co.uk





FAWSLEY HALL

HOTEL & SPA
FAWSLEY, NORTHAMPTONSHIRE

At a glance



60 bedrooms
6 flexible meeting rooms
Host up to 180 delegates
Private cinema
Stand-alone Georgian Knightley Court



Nearest Motorway Link
M1 / M40 13 miles



Nearest Airport
Birmingham 25 miles



Nearest Train Station
Long Buckby 11 miles
Northampton 15 miles



Within a 2000 acre estate
Gardens landscaped by Capability Brown



Health Club and Spa
Gym, outdoor hydro pool, indoor pool



Wi-Fi
Complimentary high speed Wi-Fi



Parking
Complimentary parking



Electric Vehicle Charge Point
On-site charging



FAWSLEY HALL HOTEL & SPA

	Max Capacity	Cabaret	Classroom	Theatre	U-Shape	Boardroom	Reception	Dining	Dimensions (metres)	Meeting Rooms	Bedrooms
Saunders	180	64	64	120	40	40	180	120	L15.5 x W8.6 x H4	6	60
Salvin Longroom	120	56	36	100	35	40	120	90	L13.8xW6.7xH4.5		
Salvin Boardroom	90	40	24	80	25	25	90	60	L11.5 x W7.3 x H4.5		
Georgian Boardroom	12	-	-	-	-	12	-	-	L7 x W5 x H3.9		
Valentine Suite	90	48	35	90	-	40	90	60	L13.6xW5.3xH3.6		
- Valentine	65	32	18	54	20	25	65	40	L7.4 x W5.3 x H3.6		
- Bowater	24	-	10	24	12	14	20	20	L6.2 x W5.4 x H3.6		

Fawsley Hall is located in a beautiful rural position in the Northamptonshire countryside near to the Silverstone Circuit and within easy reach of major motorways.

With exceptional facilities for meetings, conferences and team building events, Fawsley Hall offers a number of function rooms in the main house in addition to the self-contained Knightley Court, a Grade II listed dedicated conference centre complete with a function suite, flexible meeting rooms, a bar, cloakrooms and a cinema.

Fawsley Hall Hotel & Spa Fawsley, Daventry, Northamptonshire NN11 3BA (sat nav NN11 3BA)
01327 892000 fawsleyhall@handpicked.co.uk





NEW HALL

HOTEL & SPA
SUTTON COLDFIELD, BIRMINGHAM

At a glance



60 bedrooms
6 flexible meeting rooms
Host up to 200 delegates



Nearest Motorway Link
M6 Toll / M6 / M42 5 miles



Nearest Airport
Birmingham 12 miles



Nearest Train Station
Sutton Coldfield 2 miles /
Birmingham New Street 8 miles



26 Acres
Private grounds, pitch and putt



Health Club and Spa
Gym, pool, tennis court, spa



Wi-Fi
Complimentary high speed Wi-Fi



Parking
Complimentary parking



NEW HALL HOTEL & SPA

	Max Capacity	Cabaret	Classroom	Theatre	U-Shape	Boardroom	Reception	Dining	Dimensions (metres)	Meeting Rooms	Bedrooms
Garden Pavilion	200	120	80	180	50	60	200	150	L27 x W12 x H3.9	6	60
Chadwick	14	-	-	-	-	14	-	-	L6.8 x W4.9 x H2.8		
Great Chamber	65	30	18	65	30	30	60	50	L11.2 x W5.3 x H6		
Sir Alfred Owen	40	18	18	40	18	18	30	30	L6.7 x W7.3 x H2.8		
Garden Room	12	-	-	-	-	10	-	12	L5.7 x W4.5 x H2.7		
Oak	8	-	-	-	-	8	-	8	L4.4 x W4.2 x H2.2		

New Hall is a hidden gem set within glorious grounds and located within easy reach of the M6, M42 and the NEC.

Reputed to be the oldest inhabited moated property in England, New Hall has a number of unique venue spaces including the magnificent Great Chamber which was originally built for King Henry

VIII. The chamber, with its intricately painted ceiling, original leaded windows and impressive outlook, is a popular historic venue for boardroom and cabaret meetings as well as unique private dining events.

New Hall Hotel & Spa Walmley Road, Sutton Coldfield, Birmingham B76 1QX (sat nav B76 1PH)
0121 378 2442 newhall@handpicked.co.uk





STANBROOK ABBEY

HOTEL
WORCESTER

At a glance

70 bedrooms



15 flexible meeting rooms

Host up to 400 delegates

Games room, wine cellar and snooker room



Nearest Motorway Link

M5 5 miles



Nearest Airport

Birmingham 40 miles



Nearest Train Station

Worcester 5 miles



26 Acres

Private grounds



Wi-Fi

Complimentary high speed Wi-Fi



Parking

Complimentary parking



Electric Vehicle Charge Point

On-site charging



STANBROOK ABBEY HOTEL

	Max Capacity	Cabaret	Classroom	Theatre	U-Shape	Boardroom	Reception	Dining		Dimensions (metres)	Meeting Rooms	Bedrooms
Garden Pavilion	400	224	105	350	60	68	400	280	L24.1 x W14.8 x H4.1/2.7	15	70	
St Anne's Hall	120	56	44	70	30	38	120	80	L13.8 x W8.5 x H8.7			
Library Bar	40	-	-	-	-	-	40	-	L8.2 x W6			
Callow Great Hall	250	-	20	190	-	54	250	54	L15.5 x W9.9 x H10.7			
Groom's Room	20	10	-	-	-	12	20	12	L6.1 x W6.1			
Boardroom	20	8	-	-	-	14	20	14	L6.2 x W6 x H3.4			
Clarence Room	20	10	12	20	-	14	20	16	L6.6 x W5 x H3.3			
East Room	60	32	20	60	24	32	60	50	L8.6 x W8.6 x H3.9			
Manor House	40	-	-	30	-	-	40	-	L7 x W5.5			
George's Bar	250	-	-	-	-	-	250	-	L19.7 x W10.2			
The Bake House	12	-	-	-	-	8	12	6	L4.5 x W3.6			
Nun's Hermitage	6	-	-	-	-	6	6	6	L3.8 x W3			
Monk's Hermitage	6	-	-	-	-	6	6	6	L3.8 x W3			
Wine Cellar	80	-	-	-	-	10	80	10	L4.6 x W2			
Games Room	20	-	-	-	-	-	20	-	L6.6 x W4.2			

Located five miles from the cathedral city of Worcester at the foot of the Malvern Hills, Stanbrook Abbey is one of the Midlands' premier events spaces. A truly unique venue in its design and versatility, Stanbrook Abbey has multiple conference suites, traditional boardrooms, a games room, a garden pavilion and the impressive Callow Great Hall.

Stanbrook Abbey Hotel Jennet Tree Lane, Callow End, Worcester WR2 4TY
 01905 832940 stanbrookabbey@handpicked.co.uk



NORTH





13. Crathorne Hall Hotel
Yarm, North Yorkshire



14. Rookery Hall Hotel & Spa
Nantwich, Cheshire

NORTH

At a glance

Prime locations for Manchester, Leeds and Middlesbrough

Access to Durham Tees Valley, Manchester and Leeds

Bradford airports

Connections to M6, A1 and other major roads



15. Wood Hall Hotel & Spa
Wetherby, West Yorkshire





CRATHORNE HALL

HOTEL
YARM, NORTH YORKSHIRE

At a glance



37 bedrooms
6 flexible meeting rooms
Host up to 160 delegates



Nearest Motorway Link

A19 / A1 / M1 1 mile



Nearest Airport

Teesside International Airport
8.5 miles



Nearest Train Station

Yarm 3.2 miles / Eaglescliffe 5.3 miles



15 Acres

Private grounds



Wi-Fi

Complimentary high speed Wi-Fi



Parking

Complimentary parking



Electric Vehicle Charge Point

On-site charging



CRATHORNE HALL HOTEL

	Max Capacity	Cabaret	Classroom	Theatre	U-Shape	Boardroom	Reception	Dining	Dimensions (metres)	Meeting Rooms	Bedrooms
Drawing Room	160	80	70	140	40	40	160	120	L18.9 x W6.5 x H4.2	6	37
Edwardian Room	120	40	40	120	30	30	80	60	L11.5 x W6.5 x H4.2		
Presidents Lounge	30	24	30	30	15	20	30	26	L7.6 x W6.1 x H3.4		
Yorkshire	40	-	16	40	-	20	40	24	L9.7 x W3.8 x H3.3		
Durham	28	16	16	28	16	16	28	16	L6.2 x W6 x H3.4		
Cumbria	16	-	10	16	-	8	-	12	L4.3 x W4.5 x H3.3		

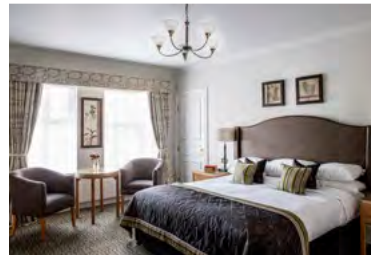
Located near to Teesside and midway between York and Newcastle, Crathorne Hall is a grand Edwardian property ideal for residential meetings and exclusive use events.

Meeting rooms have been sympathetically modernised to make the most of their traditional features and natural light. From board meetings to large conferences, Crathorne Hall's meeting spaces are light and airy and there are plenty of outdoor lawns and terrace spaces for alfresco dining and pre-event reception drinks.

Crathorne Hall Hotel Crathorne, Yarm, North Yorkshire TS15 0AR (sat nav TS15 0AR)

01642 700398 crathornehall@handpicked.co.uk





ROOKERY HALL

HOTEL & SPA
NANTWICH, CHESHIRE

At a glance



69 bedrooms
7 flexible meeting rooms
Host up to 200 delegates
Team building activity field



Nearest Motorway Link
M6 10 miles



Nearest Airport
Manchester 25 miles



Nearest Train Station
Crewe 5 miles



38 Acres
Private grounds



Health Club and Spa
Gym, pool, classes, spa



Wi-Fi
Complimentary high speed Wi-Fi



Parking
Complimentary parking



Electric Vehicle Charge Point
On-site charging



ROOKERY HALL HOTEL & SPA

	Max Capacity	Cabaret	Classroom	Theatre	U-Shape	Boardroom	Reception	Dining	Dimensions (metres)	Meeting Rooms	Bedrooms
Worleston	200	120	90	200	50	60	200	160	L15.7 x W14.8 x H3.4	7	69
- Calveley	120	50	45	120	30	30	120	80	L15.7 x W7.4 x H3.4		
- Wardle	120	50	45	120	30	30	120	80	L15.7 x W7.4 x H3.4		
Wybunbury	120	60	45	100	50	50	120	70	L19.1 x W6.3 x H2.4		
- Tarvin	60	30	24	60	28	28	60	40	L10.6 x W6.3 x H2.4		
- Tarporley	40	24	18	40	20	20	40	30	L8.5 x W6.3 x H2.4		
Audlem	30	-	12	24	16	18	30	20	L7.8 x W4.8 x H2.4		
Burland	10	-	-	-	8	10	-	10	L4.9 x W4.9 x H2.4		
Weaver Bar	100	-	-	-	-	-	100	-	L9.9 x W8.2 x H3.2		

Rookery Hall is located amid breath-taking Cheshire countryside and within easy reach of Crewe, Stoke-on-Trent, Manchester, Liverpool and Chester.

With its mix of traditional, elegant function space in the main house along with an onsite self-contained dedicated conference centre and spa, Rookery Hall is a popular venue for product launches, large conferences and team building events in its extensive grounds.

Rookery Hall Hotel & Spa Main Road, Worleston, Nantwich, Cheshire CW5 6DQ (sat nav CW5 6DQ)
01270 610016 rookeryhall@handpicked.co.uk





WOOD HALL

HOTEL & SPA
WETHERBY, WEST YORKSHIRE

At a glance



44 bedrooms
4 flexible meeting rooms
Host up to 100 delegates



Nearest Motorway Link
A1 / M1 5 miles



Nearest Airport
Leeds / Bradford 11 miles



Nearest Train Station
Harrogate 11 miles / Leeds 12 miles /
York 16 miles



100 Acres
Private grounds



Health Club and Spa
Gym, pool, spa



Wi-Fi
Complimentary high speed Wi-Fi



Parking
Complimentary parking



Electric Vehicle Charge Point
On-site charging



WOOD HALL HOTEL & SPA

	Max Capacity	Cabaret	Classroom	Theatre	U-Shape	Boardroom	Reception	Dining	Dimensions (metres)	Meeting Rooms	Bedrooms
Vavasour	100	60	40	100	45	40	100	100	L13.4 x W9.5 x H3.3	4	44
- Manton	50	32	20	50	18	20	-	50	L6.6 x W9.5 x H3.3		
- Denby	50	32	20	50	18	20	-	50	L6.6 x W9.5 x H3.3		
Wharfedale	20	-	10	20	14	16	20	20	L7.6 x W4.1 x H2.3		
Linton	14	-	-	-	-	10	-	14	L7.2 x W3.9 x H2.4		

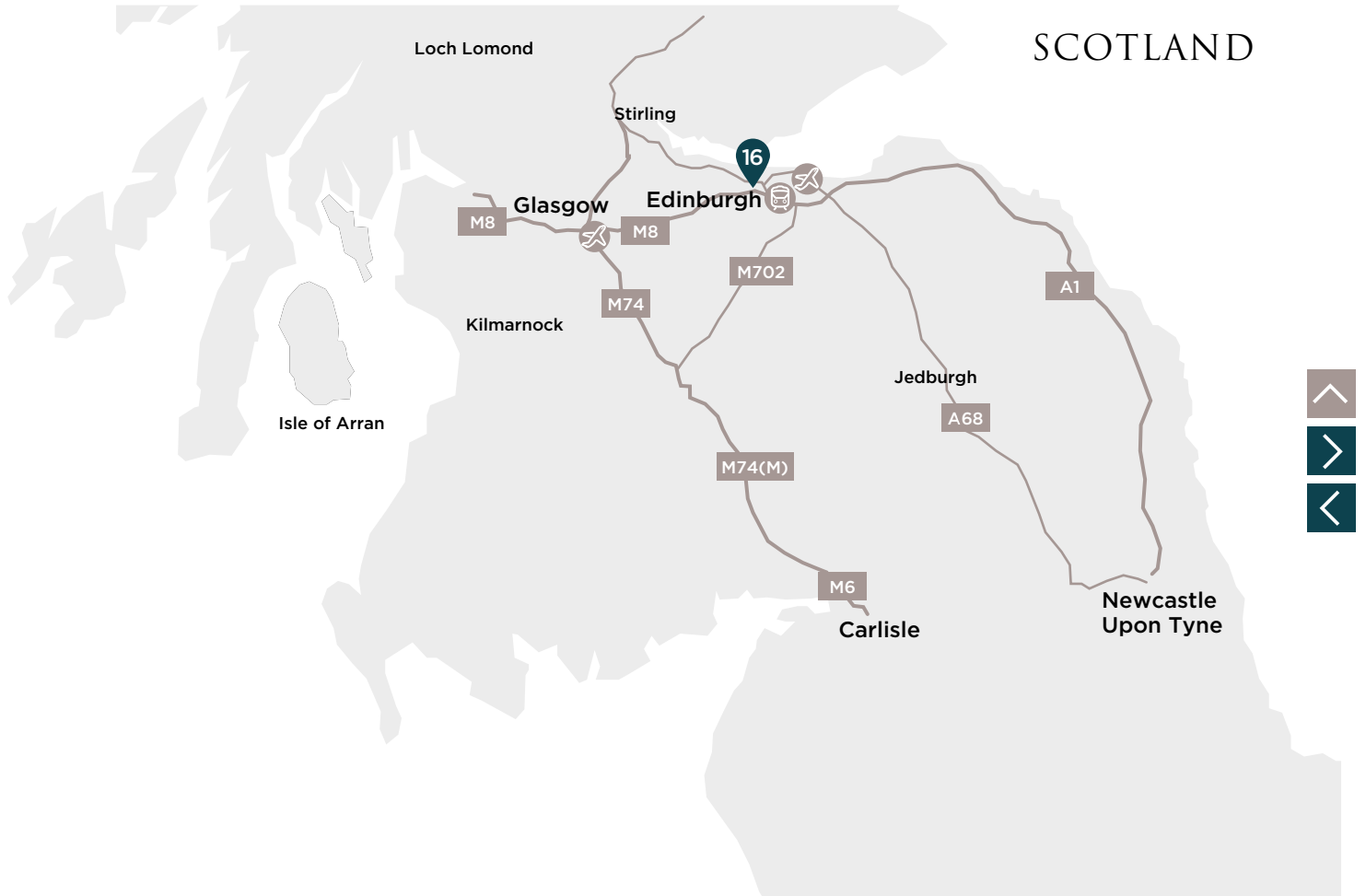
Set high on a hill within 30 minutes of Leeds, Harrogate and York, Wood Hall is a grand country house that offers a variety of meeting spaces with an elegant blend of traditional and modern décor.

With dramatic views and a lovely ambience, Wood Hall creates a perfect setting for inspirational meetings and events and boasts plenty of outdoor space for dining and team building.

Wood Hall Hotel & Spa Trip Lane, Linton, Wetherby, West Yorkshire LS22 4JA (sat nav LS22 4JA)
01937 587271 woodhall@handpicked.co.uk



SCOTLAND





16. Norton House Hotel & Spa
Edinburgh

SCOTLAND

At a glance

Easy access to Edinburgh
airport and Edinburgh
Gateway train station

Connections to M8, M9 and
other major roads





NORTON HOUSE

HOTEL & SPA
EDINBURGH

At a glance



83 bedrooms
14 flexible meeting rooms
Host up to 300 delegates
Dedicated conference facility



Nearest Motorway Link
M9 1 mile



Nearest Airport
Edinburgh 3 miles



Nearest Train Station
Edinburgh Gateway 4 miles



55 Acres
Private grounds



Health Club and Spa
Gym, pool, classes, spa



Wi-Fi
Complimentary high speed Wi-Fi



Parking
Complimentary parking



Electric Vehicle Charge Point
On-site charging



NORTON HOUSE HOTEL & SPA

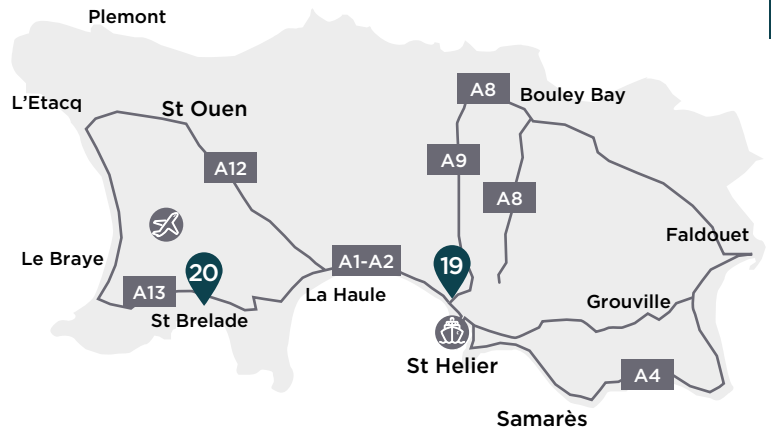
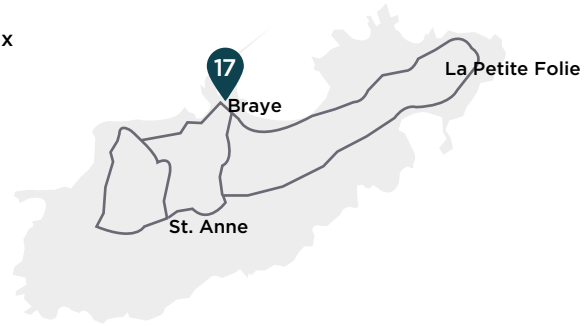
	Max Capacity	Cabaret	Classroom	Theatre	U-Shape	Boardroom	Reception	Dining	Dimensions (metres)	Meeting Rooms	Bedrooms
Usher Suite	300	120	120	240	80	60	300	160	L18.5 x W11.6 x H3.4	14	83
Garden Suite	200	100	80	180	60	60	200	140	L16 x W10.5 x H3.5		
- Meadow	80	40	30	80	24	24	80	60	L10.5 x W8 x H3.5		
- Orchard	80	40	30	80	24	24	80	60	L10.5 x W8 x H3.5		
Oak	70	20	16	40	18	16	70	40	L11.5 x W8 x H2.4		
Verandah	60	24	20	40	24	24	60	40	L8.8 x W5.9 x H3.4		
The Linden	40	20	16	40	16	16	40	30	L7.4 x W5.2 x H3.8		
Gathering 1	20	-	-	20	-	14	-	-	L4.5 x W3.5 x H3		
Gathering 2	20	-	-	20	-	14	-	-	L4.5 x W3.5 x H3		
Gathering 3	16	-	-	16	-	8	-	-	L4 x W2.5 x H2.5		
Gathering 4	30	-	-	30	-	16	-	-	L5.6 x W3.9 x H2.4		
Gathering 5	16	-	-	16	-	8	-	-	L3.3 x W3.5 x H2.4		
Gathering 6	30	-	-	30	-	16	-	-	L5.4 x W3.4 x H2.4		
The Redwood	30	12	16	30	12	16	30	30	L7.3 x W5 x H4		
Drawing Room	40	20	20	40	16	20	40	30	L7.3 x W5.1 x H3.5		

Set within 55 acres of peaceful countryside, Norton House is a country house hotel just five minutes from Edinburgh airport. With versatile function space, Norton House boasts a number of meeting rooms and function suites as well as a modern, dedicated conference centre located within a pretty original walled garden.

Norton House Hotel & Spa Ingliston, Edinburgh EH28 8LX (sat nav EH28 8LX)
0131 333 1275 nortonhouse@handpicked.co.uk



CHANNEL ISLANDS





CHANNEL ISLANDS

At a glance

Prime locations for St Peter Port, St Helier and St Brelade's Bay

Access to Jersey and Guernsey airports

Daily sailings from the UK and France





GRAND JERSEY

HOTEL & SPA
ST HELIER, JERSEY

At a glance

108 bedrooms
7 flexible meeting rooms
Host up to 250 delegates
Idyllic views of St Aubin's Bay
and Elizabeth Castle
Private cinema



Nearest Airport

Jersey 4 miles / access from major
UK airports



Ferries

Daily sailings from the UK and
France



Sea View

Beachside hotel



Health Club and Spa

Gym, pool, spa



Wi-Fi

Complimentary high speed Wi-Fi



Parking

Limited spaces available



Electric Vehicle Charge Point

On-site charging



GRAND JERSEY HOTEL & SPA

	Max Capacity	Cabaret	Classroom	Theatre	U-Shape	Boardroom	Reception	Dining	Dimensions (metres)	Meeting Rooms	Bedrooms
Grand Suite	200	72	80	150	40	50	200	110	L20.5 x W7.9 x H3.7	7	108
Alice Suite	8	-	-	-	-	8	-	8	L5.5 x W4.5 x H2.5		
Leopold Suite	80	55	30	24	26	26	80	60	L8.1 x W12.5 x H2.5		
- Arthur Suite	35	30	20	14	22	22	35	24	L8.1 x W6.3 x H2.5		
- Alfred Suite	35	30	20	14	22	22	35	24	L8.1 x W6.3 x H2.5		
Beatrice Suite	16	-	-	-	-	16	-	-	L7.5 x W6.5 x H2.5		
Private Cinema	36	-	-	36	-	-	-	-	L6 x W5 x H2.5		
Park Suites Foyer	100	-	-	-	-	-	100	-	L8.1 x W7.4		

Grand Jersey Hotel and Spa offers stylish function rooms combined with exceptional food choices and accompanying views of St Aubin's Bay. Located just 15 minutes from Jersey Airport and within walking distance of St Helier.

Park Suites features a number of different spaces to cater for a variety of events. These include intimate meeting rooms perfect for board meetings, an executive lounge area with a bar for informal break-out sessions and flexible event spaces for exhibitions and showcases. There is also a custom-built private cinema perfect for hosting presentations.

Grand Jersey Hotel & Spa Esplanade, St Helier, Jersey JE2 3QA (sat nav JE2 3QA)
01534 722301 grandjersey@handpicked.co.uk





L'HORIZON

— BEACH HOTEL & SPA —
ST BRELADE'S BAY, JERSEY

At a glance



106 bedrooms
5 flexible meeting rooms
Host up to 200 delegates
Set directly on the beach

Nearest Airport



Jersey 2 miles / access from major
UK airports

Ferries



Daily sailings from the UK and
France



Sea View

Beachside hotel



Health Club and Spa

Gym, pool, spa



Wi-Fi

Complimentary high speed Wi-Fi



Parking

Complimentary parking



Electric Vehicle Charge Point

On-site charging



L'HORIZON BEACH HOTEL & SPA

	Max Capacity	Cabaret	Classroom	Theatre	U-Shape	Boardroom	Reception	Dining	Dimensions (metres)	Meeting Rooms	Bedrooms
Crystal	200	150	100	200	60	70	200	200	L22.8 x W12.2 x H3.1	5	106
- Crystal (East)	120	100	70	120	50	50	120	120	L15.5 x W12.2 x H3.1		
- Crystal (West)	60	50	40	60	28	35	60	50	L7.3 x W12.2 x H3.1		
Drawing Room	40	30	16	40	20	24	40	25	L8.9 x W5.6 x H2.4		
The Boardroom	14	-	-	-	-	14	-	14	L9 x W4.5 x H2.9		
Atlantic Lounge (Private dining only)	40	-	-	-	-	-	40	40	L10.4 x W7.7 x H2.2		

If you are looking for a stunning beachside setting then look no further than L'Horizon Beach Hotel and Spa, located in the middle of St Brelade's Bay on the island of Jersey.

The hotel is easily accessible, just 2 miles from Jersey Airport with connections to a number of UK airports and regular flights every day. The hotel is well suited for residential training, conferences or team building events and the setting provides the perfect backdrop for fresh thinking.

L'Horizon Beach Hotel & Spa La Route de la Baie, St Brelade, Jersey JE3 8EF (sat nav JE3 8EF)

01534 743101 | lhORIZON@handpicked.co.uk





ST PIERRE PARK

– HOTEL, SPA & GOLF RESORT –
ST PETER PORT, GUERNSEY

At a glance



116 bedrooms
7 flexible meeting rooms
Host up to 350 delegates
Golf course on-site

Nearest Airport



Guernsey 4 miles / access from major UK airports



Ferries

Daily sailings from the UK and France



35 Acres

Private grounds, golf course



Health Club and Spa

Gym, pool, classes, spa



Wi-Fi

Complimentary high speed Wi-Fi



Parking

Complimentary parking



ST PIERRE PARK HOTEL, SPA & GOLF RESORT

	Max Capacity	Cabaret	Classroom	Theatre	U-Shape	Boardroom	Reception	Dining	Dimensions (metres)	Meeting Rooms	Bedrooms
La Fontaine Suite	350	184	150	320	70	78	350	288	L23.2 x W19 x H2.7	7	116
La Seigneurie	200	80	100	200	60	78	200	144	L20.1 x W9.6 x H2.9		
Petite Fontaine	50	32	30	50	28	30	50	48	L10.1 x W7.6 x H2.7		
Petite Seigneurie	50	32	25	50	28	30	50	40	L9.3 x W7.1 x H2.9		
Victor Hugo Suite	120	80	75	150	60	70	120	108	L24.5 x W7.9 x H2.3		
- Liberte	50	32	25	50	22	26	50	36	L10 x W7.9 x H2.3		
- Fraternite	50	24	25	50	22	24	50	36	L7.7 x W7.9 x H2.3		
- Egalite	50	24	25	50	16	20	50	36	L6.8 x W7.9 x H2.3		

Situated in St Peter Port in Guernsey, St Pierre Park has the most comprehensive offering for meetings, conferences, team building and incentive experiences on the island under one roof.

Providing an inspirational setting for award ceremonies, product launches and team building events with extensive space both inside and out.

St Pierre Park Hotel, Spa & Golf Resort St Peter Port, Guernsey GY1 1FD (sat nav GY1 1FD)
01481 728282 stpierrepark@handpicked.co.uk





FERMAIN VALLEY

HOTEL
ST PETER PORT, GUERNSEY

Fermain Valley

A 4* resort hotel in St Peter Port, Guernsey

49 bedrooms including 4 treehouse suites

Dedicated conference space

Host up to 80 delegates

Private cinema

Three popular restaurants

Tree House Spa

Swimming pool and sauna

01481 235666 reservations.fermain@handpicked.co.uk



BRAYE BEACH

HOTEL
ALDERNEY

Braye Beach

AA 4* boutique beachside hotel in Alderney

27 bedrooms

Dedicated boardroom

Host up to 16 delegates

Private cinema

Beach bar and terraces

Brasserie restaurant

Steakhouse restaurant and cocktail bar

01481 824300 holiday.braye@handpicked.co.uk



OUR COMMITMENT

Flexible Approach for Bookers

- Our best price promise
- Flexible room set-up options
- Packages with transparent pricing
- Detailed personalised quote sent within one hour for a single site enquiry and within four hours for a multi-site enquiry
- Complimentary room hire on 24 and 32 hour residential meetings
- Final invoice sent within three working days post event
- Contract issued within 48 hours of written or verbal confirmation
- Courtesy call made 24-48 hours prior to the event to check final details

Peace of Mind for Organisers

- Priority reserved car parking
- Event room set up one hour before agreed start time
- Electronic support pack with table top multi-plug adaptors, Sonos smart speaker, LCD projector and screen, flip chart and stationery pack
- Flexible food options using locally-sourced ingredients
- Dedicated Hand Picked Host available from the moment you arrive and at the touch of a button from your meeting room

Satisfaction for Delegates

- Classic architectural features with contemporary comforts
- Fast, efficient Wi-Fi in your meeting room and throughout the venue
- Morning and afternoon breaks with locally sourced treats
- Delicious and creative lunch options
- Unlimited tea and coffee
- Complimentary on-site car parking



PRIVILEGE BUSINESS REWARDS

Join our exciting loyalty programme to earn points for your conferences, meetings and accommodation. As a member, corporate bookers or agents can redeem points for a variety of exclusive Hand Picked experiences, or for high street shopping vouchers.

handpickedhotels.co.uk/privilege-rewards

		Page number	Max Capacity	Cabaret	Classroom	Theatre	U-Shape	Boardroom	Reception	Dining	Largest room dimensions (metres)	Meeting Rooms	Bedrooms	Nearest Airport (miles)	Nearest Motorway (miles)	Nearest Train Station (miles)	Gym	Spa	Pool
M25 & South East	Brandshatch Place Hotel & Spa Kent	12	160	60	48	160	36	31	150	110	L14.4 x W11.1 x H3	6	38	London City (20)	M25/M20 (5)	Longfield (2)	✓	✓	✓
	Buxted Park Hotel East Sussex	14	200	85	60	180	45	50	200	120	L13.6 x W9.1 x H4	5	43	Gatwick (24)	M23/M25 (24)	Buxted (0.5)	✓	-	-
	Chilston Park Hotel Kent	16	150	46	50	120	40	50	150	100	L15.2 x W7.8 x H3	8	53	Gatwick (43)	M25/M20 (6)	Lenham (1.5)	-	-	-
	Nutfield Priory Hotel & Spa Surrey	18	120	60	50	100	40	42	120	100	L12.6 x W8.8 x H4.9	9	60	Gatwick (10)	M25 (4)	Redhill (2)	✓	✓	✓
	Woodlands Park Hotel Surrey	20	200	90	40	200	44	50	200	150	L13 x W12 x H3	9	57	Heathrow (16)	M25 (6)	Cobham (1)	✓	-	-
South West	Audleys Wood Hotel Hampshire	24	200	160	80	200	45	60	200	200	L30 x W12 x H2.3	6	68	Southampton (31)	M3 (2)	Basingstoke (2)	-	-	-
	Bailbrook House Hotel Bath	26	200	80	60	160	40	48	200	120	L17.8 x W8.4 x H3.5	12	88	Bristol (20)	M4 (8)	Bath Spa (2.5)	✓	-	-
	Rhinefield House Hotel Hampshire	28	160	60	72	160	55	56	130	100	L14.6 x W8.3 x H3	9	50	Bournemouth (20)	M27 (8)	Brockenhurst (3)	✓	✓	✓
Midlands	Ettington Park Hotel Warwickshire	32	100	64	48	100	42	48	100	100	L21 x W 5.4 x H 6.1	6	47	Birmingham (31)	M40 (11)	Stratford-upon-Avon (6)	-	-	✓
	Fawsley Hall Hotel & Spa Northamptonshire	34	180	64	64	120	40	40	180	120	L15.5 x W8.6 x H4	6	60	Birmingham (25)	M1/M40 (13)	Long Buckby (11)	✓	✓	✓
	New Hall Hotel & Spa Birmingham	36	200	120	80	180	50	60	200	150	L27 x W12 x H3.9	6	60	Birmingham (12)	M6/M42 (5)	Sutton Coldfield (2)	✓	✓	✓
	Stanbrook Abbey Hotel Worcester	38	400	224	105	350	60	68	400	280	L24.1 x W14.8 x H4.1/2.7	15	70	Birmingham (40)	M5 (5)	Worcester (5)	-	-	-
North	Crathorne Hall Hotel North Yorkshire	42	160	80	70	120	50	50	160	100	L18.9 x W6.5 x H4.2	6	37	Teesside Int. Airport (8.5)	A19 (1)	Yarm (3.2)	-	-	-
	Rookery Hall Hotel & Spa Cheshire	44	200	120	90	200	50	60	200	160	L15.7 x W14.8 x H3.4	7	69	Manchester (25)	M6 (10)	Crewe (5)	✓	✓	✓
	Wood Hall Hotel & Spa West Yorkshire	46	100	60	40	100	45	40	100	100	L13.4 x W9.5 x H3.3	4	44	Leeds/Bradford (11)	A1 (5)	Harrogate (11)	✓	✓	✓
Scotland	Norton House Hotel & Spa Edinburgh	50	300	120	120	240	80	60	300	200	L18.5 x W11.6 x H3.4	14	83	Edinburgh Gateway (4)	M9 (1)	Edinburgh Haymarket (7)	✓	✓	✓
Channel Islands	Grand Jersey Hotel & Spa Jersey	54	200	72	80	150	40	50	200	110	L20.5 x W7.9 x H3.7	7	108	Jersey (4)	-	-	✓	✓	✓
	L'Horizon Beach Hotel & Spa Jersey	56	200	150	100	200	60	70	200	200	L22.8 x W12.2 x H3.1	5	106	Jersey (2)	-	-	✓	✓	✓
	St Pierre Park Hotel, Spa & Golf Resort Guernsey	58	350	184	150	320	70	78	350	276	L23.2 x W19 x H2.7	7	116	Guernsey (4)	-	-	✓	✓	✓
	Braye Beach Hotel Alderney	60	16	16	16	16	16	16	16	16	L6 x W6 x H3	1	27	Alderney (1.5)	-	-	-	-	-
	Fermain Valley Hotel Guernsey	60	80	40	70	40	24	24	80	70	L7 x W7 x H3	1	49	Guernsey (3)	-	-	-	✓	✓





*Hand*PICKED
HOTELS

Hand Picked Hotels

Meetings and Events Desk
The Stables, Crathorne Hall Hotel, Crathorne,
Yarm, North Yorkshire TS15 0AR

01642 706600
businessevents@handpicked.co.uk

handpickedhotels.co.uk



		Page number	Max Capacity	Cabaret	Classroom	Theatre	U-Shape	Boardroom	Reception	Dining
M25 & South East	Brandshatch Place Hotel & Spa Kent	12	160	60	48	160	36	31	150	110
	Buxted Park Hotel East Sussex	14	200	85	60	180	45	50	200	120
	Chilston Park Hotel Kent	16	150	46	50	120	40	50	150	100
	Nutfield Priory Hotel & Spa Surrey	18	120	60	50	100	40	42	120	100
	Woodlands Park Hotel Surrey	20	200	90	40	200	44	50	200	150
South West	Audleys Wood Hotel Hampshire	24	200	160	80	200	45	60	200	200
	Bailbrook House Hotel Bath	26	200	80	64	160	40	48	200	120
	Rhinefield House Hotel Hampshire	28	160	60	72	160	55	56	130	100
Midlands	Ettington Park Hotel Warwickshire	32	100	64	48	100	42	48	100	100
	Fawsley Hall Hotel & Spa Northamptonshire	34	180	64	64	120	40	40	180	120
	New Hall Hotel & Spa Birmingham	36	200	120	80	180	50	60	200	150
	Stanbrook Abbey Hotel Worcester	38	400	224	105	350	60	68	400	280
North	Crathorne Hall Hotel North Yorkshire	42	160	80	70	120	50	50	160	100
	Rookery Hall Hotel & Spa Cheshire	44	200	120	90	200	50	60	200	160
	Wood Hall Hotel & Spa West Yorkshire	46	100	60	40	100	45	40	100	100
Scotland	Norton House Hotel & Spa Edinburgh	50	300	120	130	300	80	50	300	200
Channel Islands	Grand Jersey Hotel & Spa Jersey	54	250	72	80	150	40	50	250	110
	L'Horizon Beach Hotel & Spa Jersey	56	200	150	100	200	60	70	200	200
	St Pierre Park Hotel, Spa & Golf Resort Guernsey	58	350	184	150	320	70	78	350	276
	Braye Beach Hotel Alderney	60	16	16	16	16	16	16	16	16
	Fermain Valley Hotel Guernsey	60	80	40	70	40	24	24	80	70

Largest room dimensions (metres)	Meeting Rooms	Bedrooms	Nearest Airport (miles)	Nearest Motorway (miles)	Nearest Train Station (miles)	Gym	Spa	Pool
L14.4 x W11.1 x H3	6	38	London City (20)	M25/M20 (5)	Longfield (2)	✓	✓	✓
L13.6 x W9.1 x H4	5	43	Gatwick (24)	M23/M25 (24)	Buxted (0.5)	✓	-	-
L15.2 x W7.8 x H3	9	53	Gatwick (43)	M25/M20 (6)	Lenham (1.5)	-	-	-
L12.6 x W8.8 x H4.9	9	60	Gatwick (10)	M25 (4)	Redhill (2)	✓	✓	✓
L13 x W12 x H3	9	57	Heathrow (16)	M25 (6)	Cobham (1)	✓	-	-
L30 x W12 x H2.3	6	68	Southampton (31)	M3 (2)	Basingstoke (2)	-	-	-
L17.8 x W8.4 x H3.5	13	88	Bristol (20)	M4 (8)	Bath Spa (2.5)	✓	-	-
L14.6 x W8.3 x H3	9	50	Bournemouth (20)	M27 (8)	Brockenhurst (3)	✓	✓	✓
L21 x W 5.4 x H 6.1	6	47	Birmingham (31)	M40 (11)	Stratford-upon-Avon (6)	-	-	✓
L15.5 x W8.6 x H4	7	60	Birmingham (25)	M1/M40 (13)	Long Buckby (11)	✓	✓	✓
L27 x W12 x H3.9	6	60	Birmingham (12)	M6/M42 (5)	Sutton Coldfield (2)	✓	✓	✓
L24.1 x W14.8 x H4.1/2.7	15	70	Birmingham (40)	M5 (5)	Worcester (5)	-	-	-
L18.9 x W6.5 x H4.2	6	37	Teesside Int. Airport (8.5)	A19 (1)	Yarm (3.2)	-	-	-
L15.7 x W14.8 x H3.4	7	69	Manchester (25)	M6 (10)	Crewe (5)	✓	✓	✓
L13.4 x W9.5 x H3.3	4	44	Leeds/Bradford (11)	A1 (5)	Harrogate (11)	✓	✓	✓
L18.5 x W11.6 x H3.4	14	83	Edinburgh Gateway (4)	M9 (1)	Edinburgh Haymarket (7)	✓	✓	✓
L20.5 x W7.9 x H3.7	8	108	Jersey (4)	-	-	✓	✓	✓
L22.8 x W12.2 x H3.1	5	106	Jersey (2)	-	-	✓	✓	✓
L23.2 x W19 x H2.7	7	131	Guernsey (4)	-	-	✓	✓	✓
L6 x W6 x H3	1	27	Alderny (1.5)	-	-	-	-	-
L7 x W7 x H3	1	49	Guernsey (3)	-	-	-	✓	✓

